

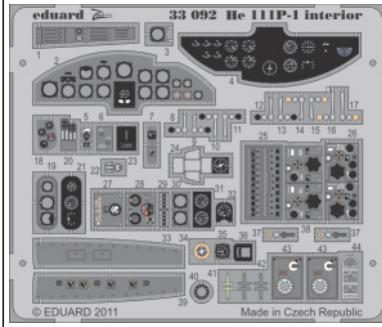


He 111P-1 interior S.A.



33 092

1/32 scale detail set for Revell kit • sada detailů pro model Revell 1/32



- SYMMETRICAL ASSEMBLY
SYMETRICKÁ MONTÁŽ
- REMOVE
ODSTRANIT
- BEND
OHNOUT
- REPLACE
NAHRADIT
- GRIND
OBROUSIT
- OPTION
VOLBA

ORIGINAL KIT PARTS
PŮVODNÍ DÍLY STAVEBNICE
PHOTO-ETCHED PARTS
LEPTANÉ DÍLY
PARTS TO BE REMOVED
DÍLY K ODSTRANĚNÍ
FILL
TMELIT

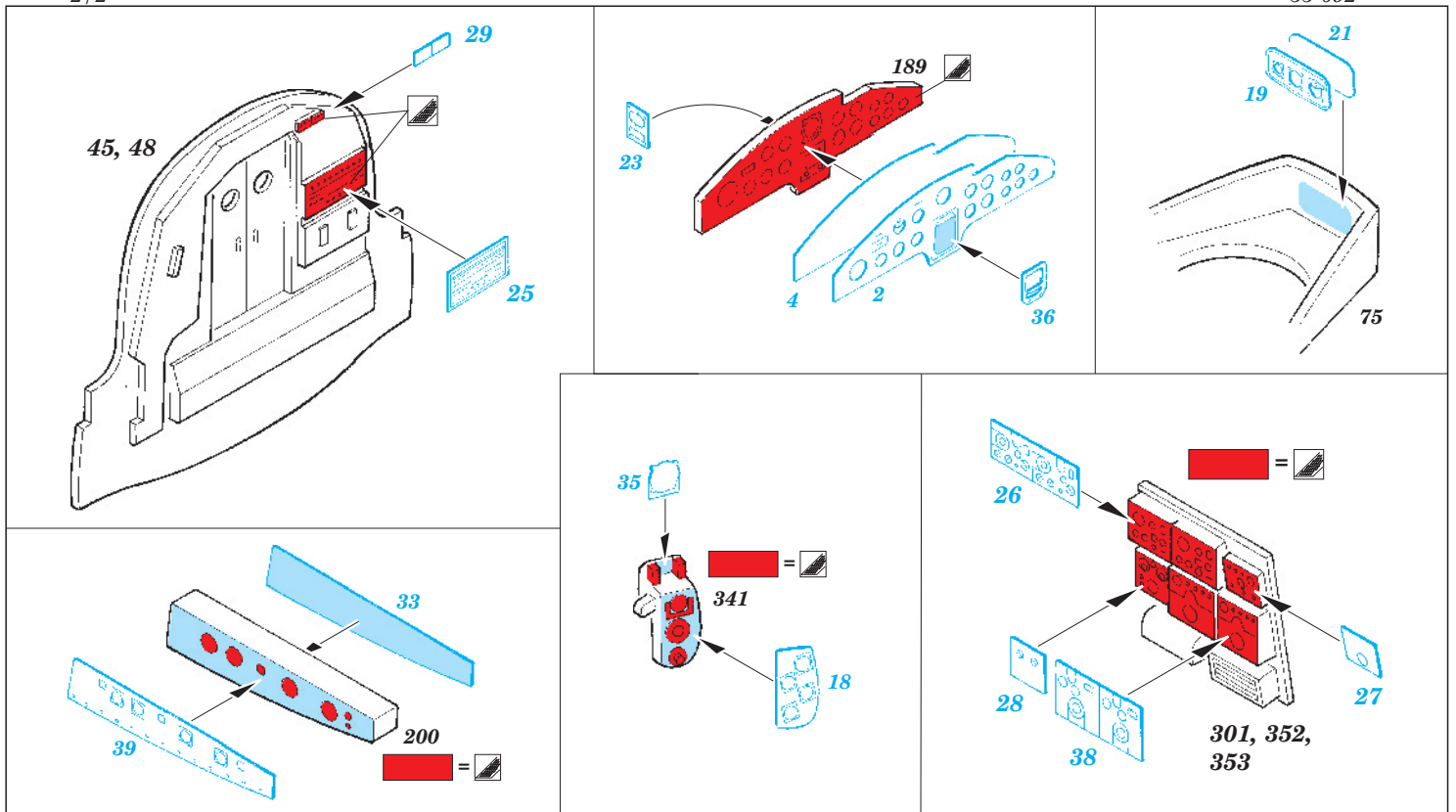
The assembly diagrams are organized into several sections:

- Top Left:** Shows the installation of gauge 40 into panel 181, and the attachment of part 24 to a base.
- Top Middle:** Shows the assembly of photo-etched parts 43 and 184, and the installation of part 182 into panel 30.
- Top Right:** Shows the installation of parts 32 and 3 into a mechanism, and the attachment of part 5 to panel 196.
- Middle Left:** Shows the installation of parts 41, 42, and 42 into panel 44, and the attachment of part 6 to panel 198.
- Middle Right:** Shows the installation of parts 13, 14, 16, 17, 15, 11, 10, 9, 8, and 20 into a long panel (part 1), and the installation of parts 214 and 215 into a red component.
- Bottom Left:** Shows the installation of part 22 into panel 179, and the attachment of part 37 to panel 199.
- Bottom Middle:** Shows the installation of part 7 into panel 213.
- Bottom Right:** Shows the installation of part 34 into panel 211.

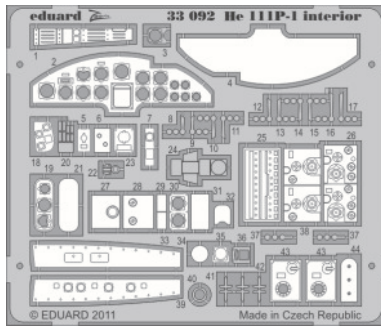
For further detail sets look for **eduard** 32 289 He 111P-1 exterior
(not included in this set)

For further detail sets look for **eduard** 32 400 He 111P-1 undercarriage
(not included in this set)

For further detail sets look for **eduard** 32 293 He 111 bomb bay
(not included in this set)

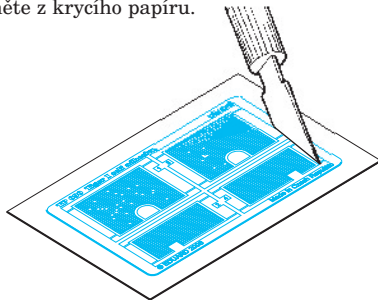


PARTS WITH GLUE • DÍLY OPATŘENÉ LEPIDLEM



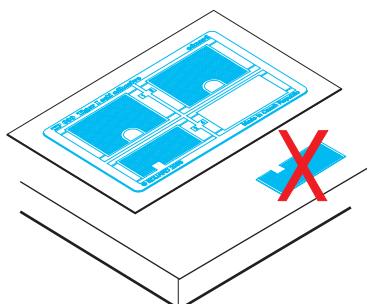
1. Separate the etched components from their frames on the protective paper. Removal from the paper is done only after separation of the parts from the frames.

1. Samolepící díly oddělujte od rámečku na podkladovém papíře. Po oddělení je sejměte z krycího papíru.

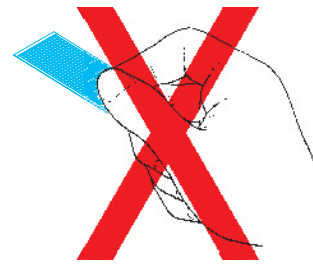


2. Do not inadvertently place etched components on an unwanted surface. Attempts to remove will result in damage to your part.

2. Nepokládejte samolepící díly na volné plochy. Pokud je omylem přilepíte, při pokusu o odlepení dojde k poškození dílu.

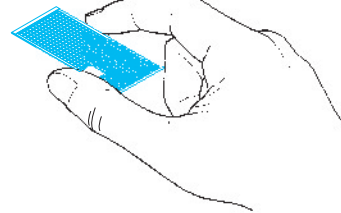


3. Do not touch the adhesive areas of the etched components.
3. Nesahejte na části dílů, na kterých je naneseno lepidlo.



4. Hold the parts by the edges, or at areas free of adhesive.

4. Samolepící díly berte za hrany nebo za části, na kterých není nanesené lepidlo.



5. Lightly place the component in the desired location and position. Adjust as required. The component will be permanently affixed when pressed onto its intended location, its location can be adjusted.

5. Díl lehce položte do pozice, ve které má být nalepen. Upravte přesnou pozici a přimáčkněte. Díl dokonale přilne až po přimáčknutí, před přimáčknutím lze dílem opatrně manipulovat.

